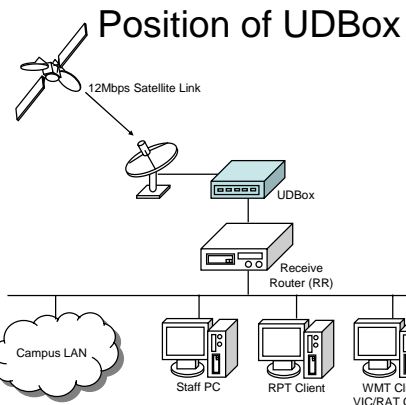


UDBox Instruction

1



Outline

- What is UDBox?
- UDBox Operation
 - Installation
 - Maintenance
 - Trouble Shooting

2

UDBox Operation

Installation

5

What is UDBox?

- Satellite Receiver for AI3/SOI-Asia Network
 - Satellite Demodulator and Bridge
 - Input satellite signal via Coaxial Interface
 - Output Ethernet Frames
 - UDLR's Receiver Function
 - LLTM (GRE Encapsulation)

3

Installation Steps

- Check the Power Voltage!!
1. Preparation
 - Connect a browser PC to UDBox
 2. Step-by-Step Configuration
 3. Network Installation
 4. Tuner Configuration
 5. Status Check

6

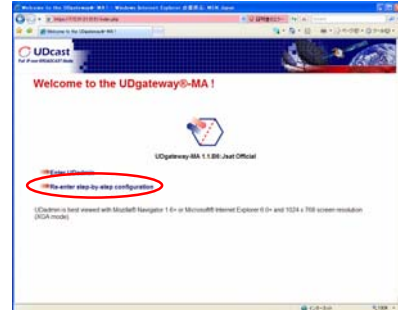
Power Voltage (115V or 2??V)



7

Start Step-by-Step Configuration

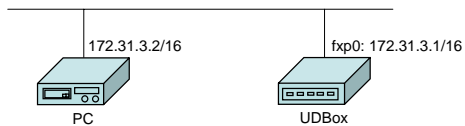
- Access <https://172.31.3.1:3131/>



10

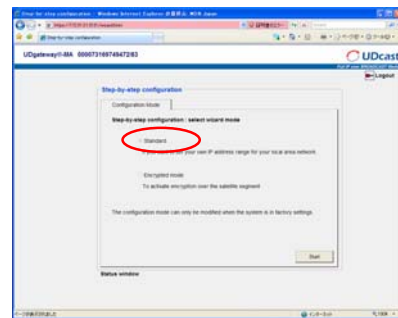
Connect a browser PC

- UDBox is configurable only by WEB (HTTPS)
 - Need another PC to configure UDBox
 - Default IP address of UDBox: 172.31.3.1/16
 - Give IP address 172.31.3.2/16 to Browser PC



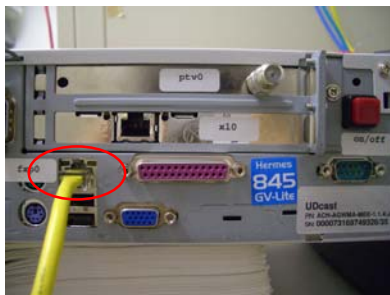
8

Select Wizard Mode (Standard)



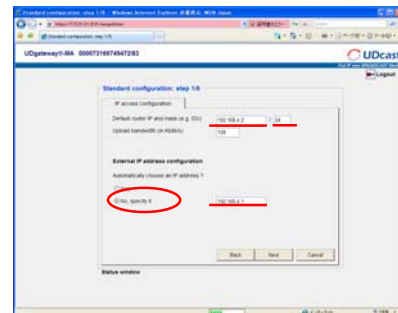
11

Interface for Initial Configuration



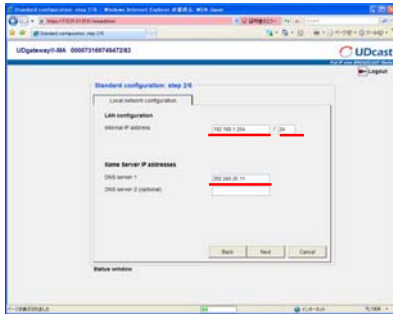
9

Step 1/6



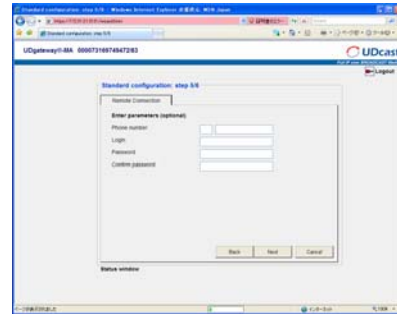
12

Step 2/6



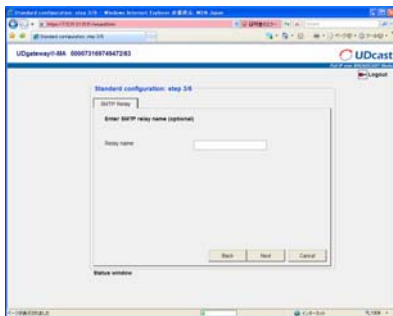
13

Step 5/6



16

Step 3/6



14

Step 6/6 (1)



17

Step 4/6



15

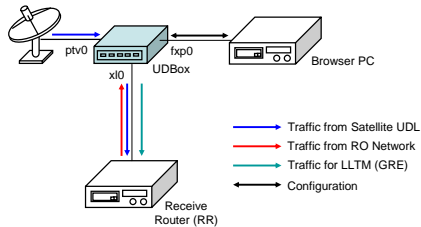
Step 6/6 (2)



18

Network Installation

- Ethernet (Cross) Connection
 - UDBox (fxp0) <-> Browser PC
 - UDBox (x10) <-> Receive Router



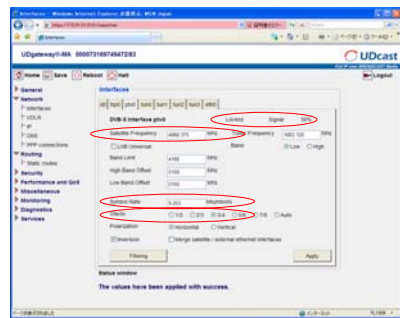
Tuner Configuration (before) (3)



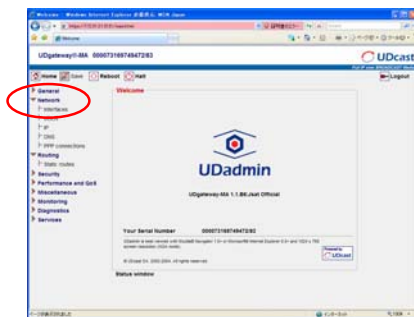
Tuner Configuration (1)



Tuner Configuration (after) (3)



Tuner Configuration (2)



Tuner Configuration (4)

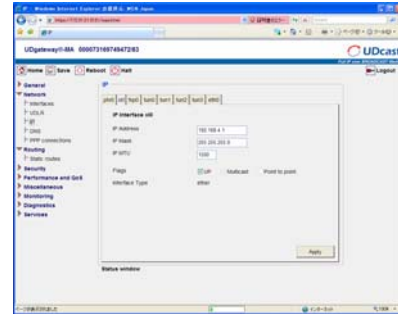
- AI3-dependent Information
 - Satellite Frequency
 - Symbol Rate
 - Viterbi
- Reference
 - http://www.ai3.net/op/documents/pdf/UAT_booking.pdf

UDBox Maintenance

- Check UDBox Parameters
 - UDLR Interface
 - x10, fxp0 Interface Address/Mask
 - Gateway to UDLR Feed
 - Routing Table
- Save / Reboot / Shutdown

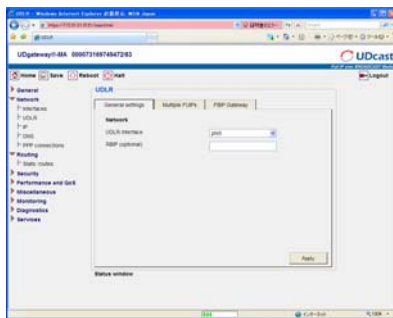
25

x10 Interface



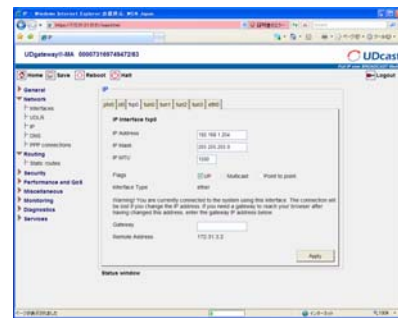
28

UDLR Interface



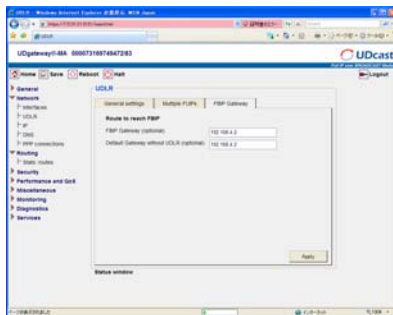
26

fxp0 Interface (Configuration Only)



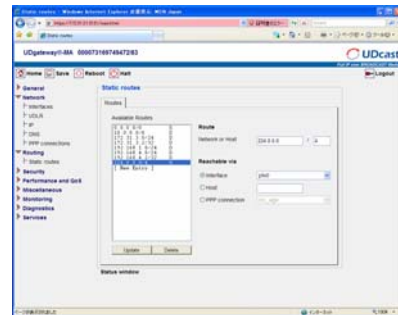
29

Gateway to UDLR Feed



27

Routing Table



30

Save / Reboot / Shutdown



31

When the carrier could be lost? (1)

- SFC (Keio Univ) stops transmission because of maintenance or trouble
 - Announcement should be made to partners@asia.soi.wide.ad.jp
partners@ai3.net
 - Please wait for SFC to resume transmission

34

UDBox Operation

Trouble Shooting

32

When the carrier could be lost? (2)

- Season of “Sun Interference”
 - Announcement should be made to partners@asia.soi.wide.ad.jp
partners@ai3.net
 - Check if SFC or your site is affected by the sun interference
 - http://www.jsat.net/satellite/sun/j3_en.html
 - Wait until sun interference finishes

35

What could be a trouble?

- Somehow, RR is seem to be disconnected from the Internet
 - The receive status is “No signal” on UDBox.
 - The receive status is “Locked” on UDBox.

33

When the carrier could be lost? (3)

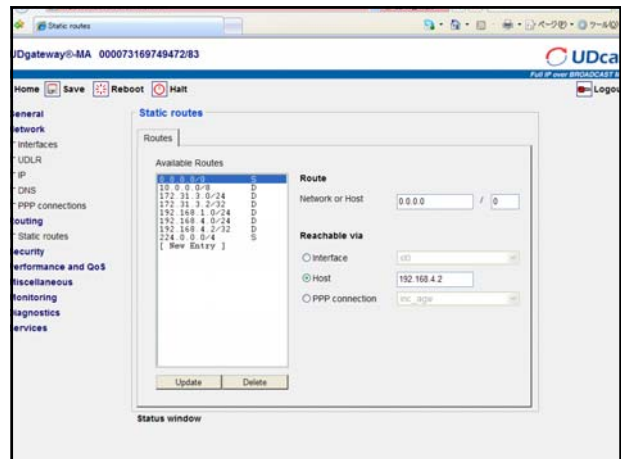
- Hardware Trouble on
 - UDBox?
 - Your earth station?
- Make report to the operator ML!!
 - operators@asia.soi.wide.ad.jp

36

Any other troubles?

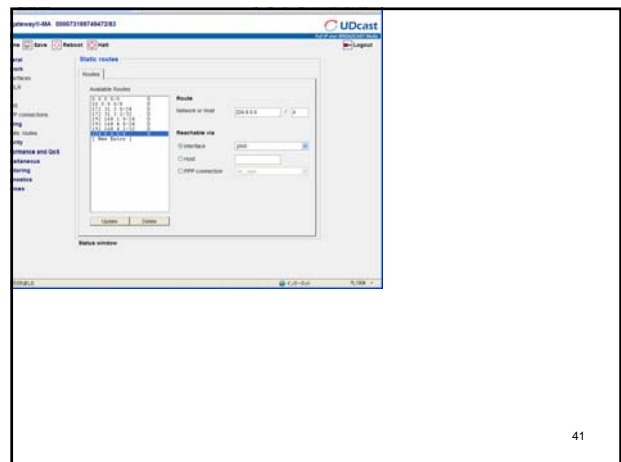
- Report any trouble to operator@asia.soi.wide.ad.jp
- Manual is available at “Documentation” of <http://www.ai3.net/op/>
- UDBox operation is still to be established

37



Thank you very much

38



41

ここから

39