

FreeBSD Installation

The SOI Asia network uses a router, called SOI Asia Receive Router, and it runs on one of the FreeBSD, which is one of the UNIX systems. It is important for SOI Asia operators to know how to use and administrate the FreeBSD system. In this lecture, we will learn how to install the FreeBSD system into your PC. The version we use today is FreeBSD 4.9. Please boot your PC, and insert the FreeBSD 4.9 CD, and follow the screen dump as follows.

1. Choose *Skip kernel configuration and continue with installation*. In the kernel configuration, you can tell the PC which device you are using, but you can skip it and use the default, too.

```
Kernel Configuration Menu

Skip kernel configuration and continue with installation
Start kernel configuration in full-screen visual mode
Start kernel configuration in CLI mode

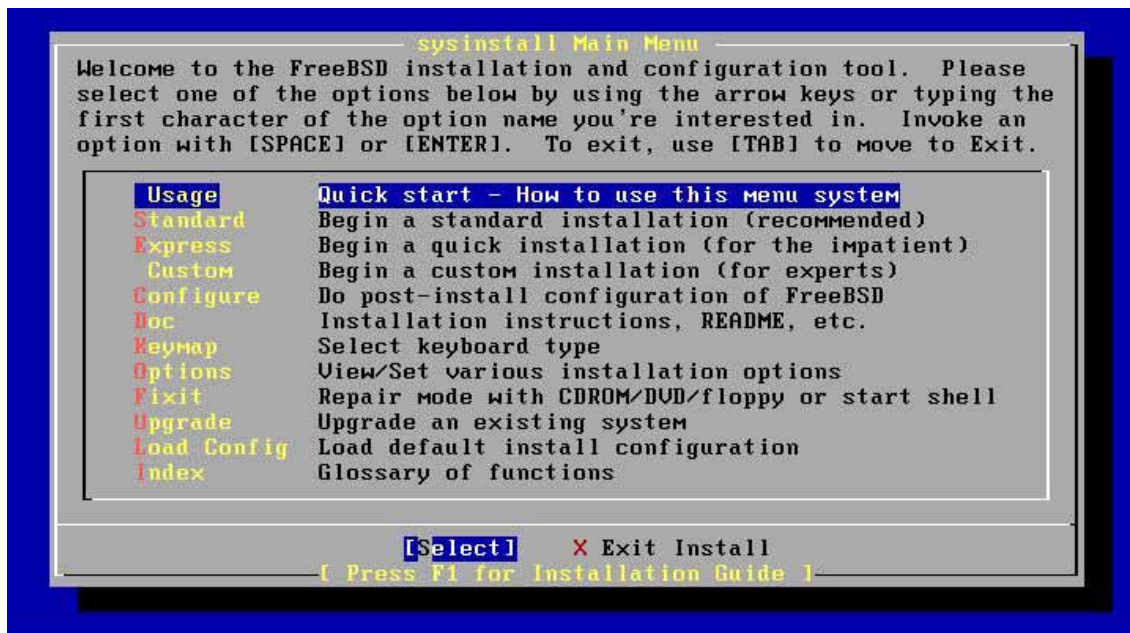
Here you have the chance to go into kernel configuration mode, making
any changes which may be necessary to properly adjust the kernel to
match your hardware configuration.

If you are installing FreeBSD for the first time, select Visual Mode
(press Down-Arrow then ENTER).

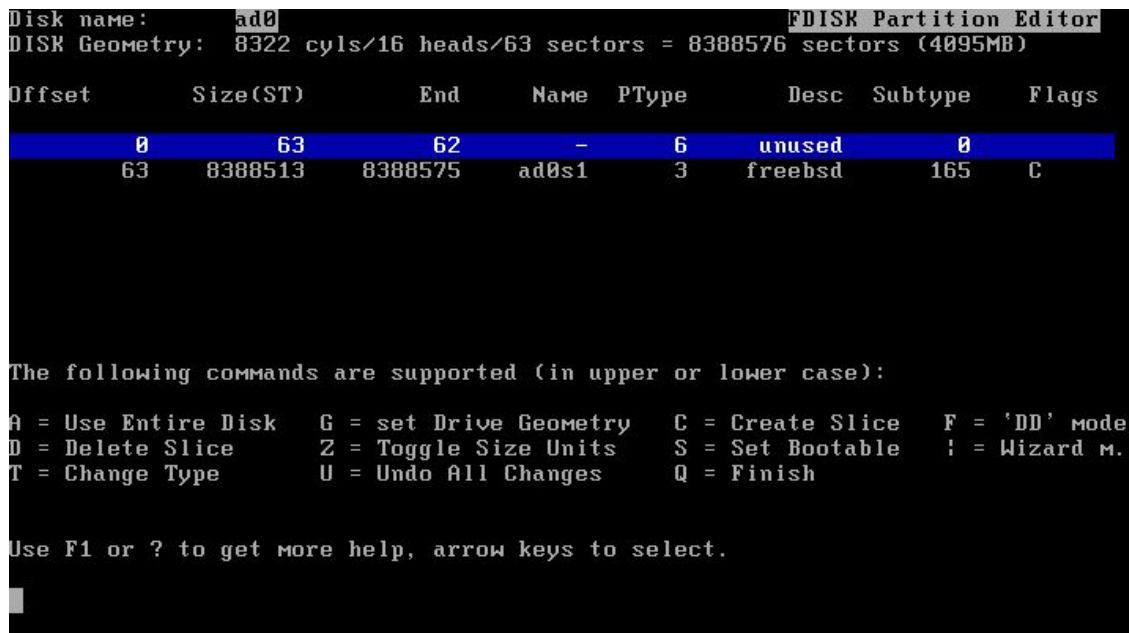
If you need to do more specialized kernel configuration and are an
experienced FreeBSD user, select CLI mode.

If you are certain that you do not need to configure your kernel
then simply press ENTER or Q now.
```

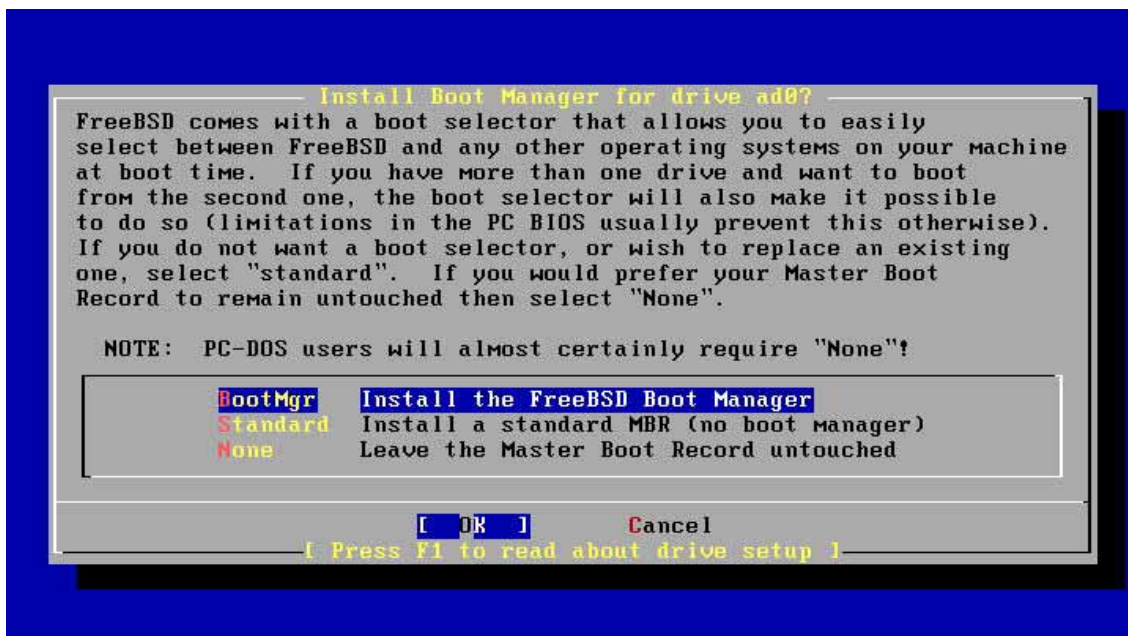
- In the sysinstall Main Menu, choose *Standard* to start the installation.



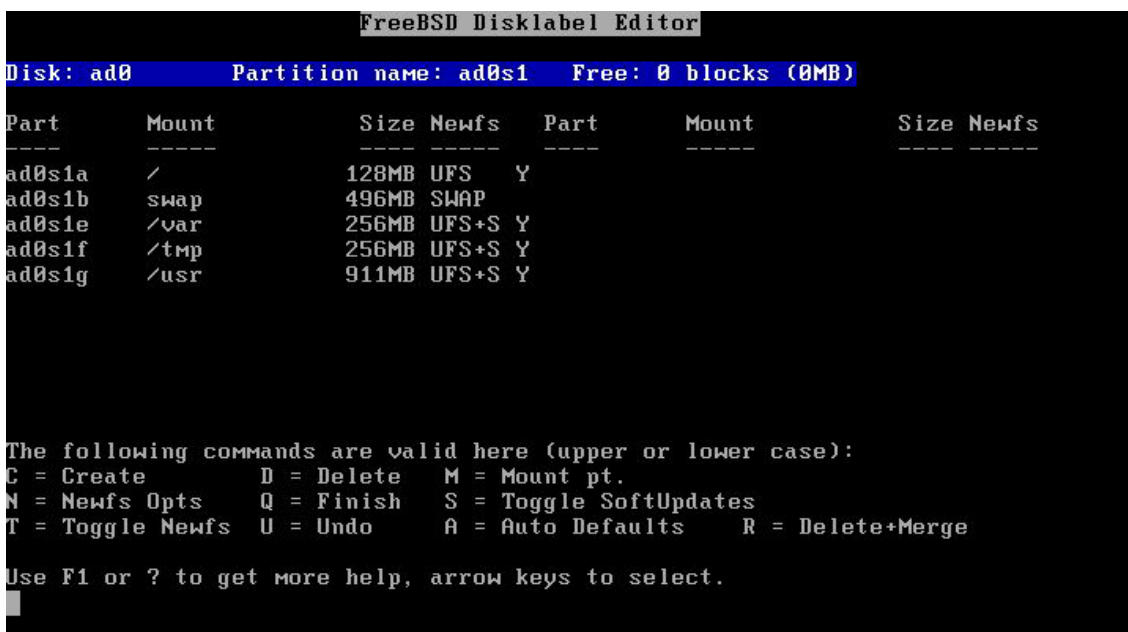
- Choose *Partition* to set which slice you are using. In this lecture, the partitions are already set, so please follow the lecturer's instruction. Press Q to finish the partitioning.



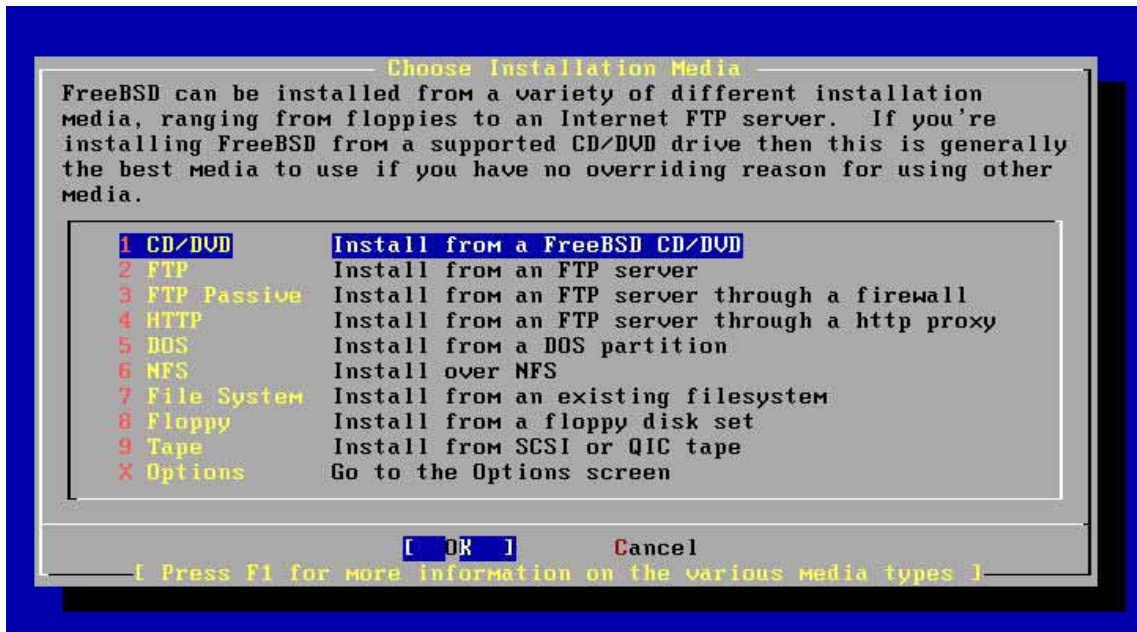
- You will be asked if you are going to install the boot manager. Boot manager is one of the programs to select the Operation Systems when booting. If you are installing just one operating system, you can choose *Standard*. However, in this workshop, you will be installing both FreeBSD and Linux Fedora CORE 1, so please choose *BootMgr*.



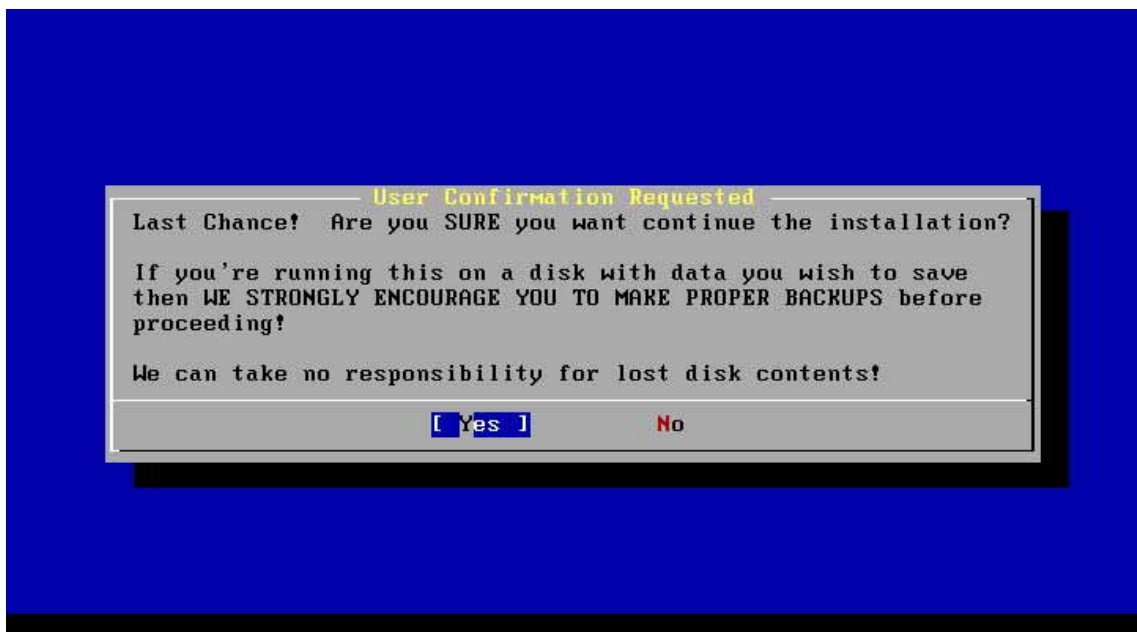
- Choose *Label* to set the partitions inside FreeBSD system. In this lecture, choose A to use the default.



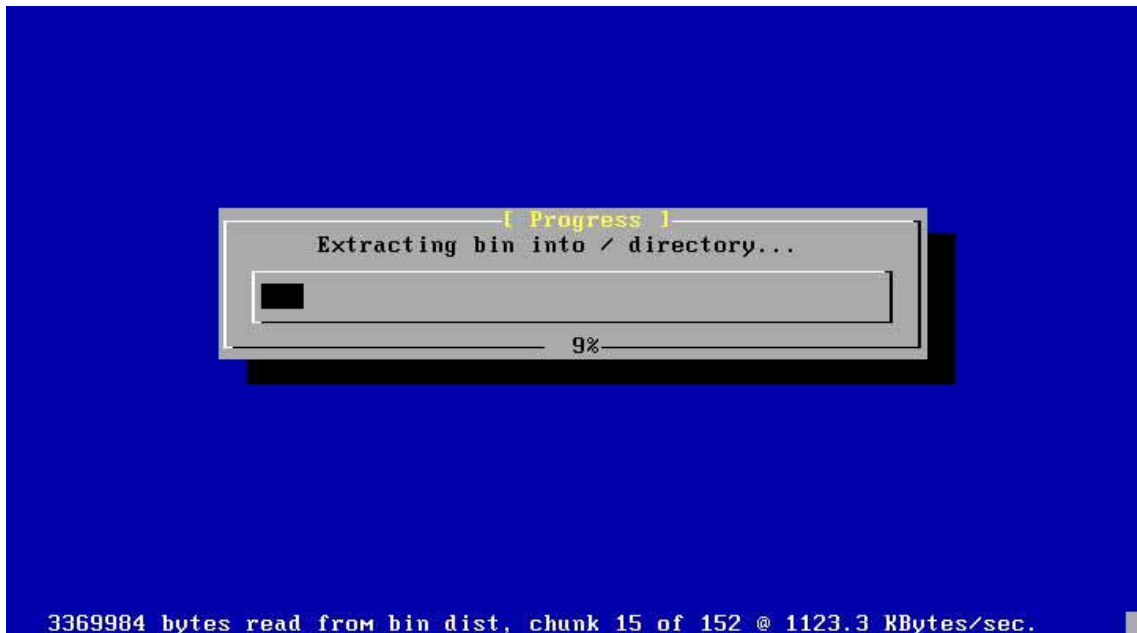
6. Choose 5. *Distribution* to choose which package you will install. In this installation, please use “*Kern Developer*”. You will be asked to install the port, so press “Yes”. Choose Exit to proceed installing.
7. Choose 6. Media to configure the media you will be using for installation. We use CD, so press “*CD/DVD*”.



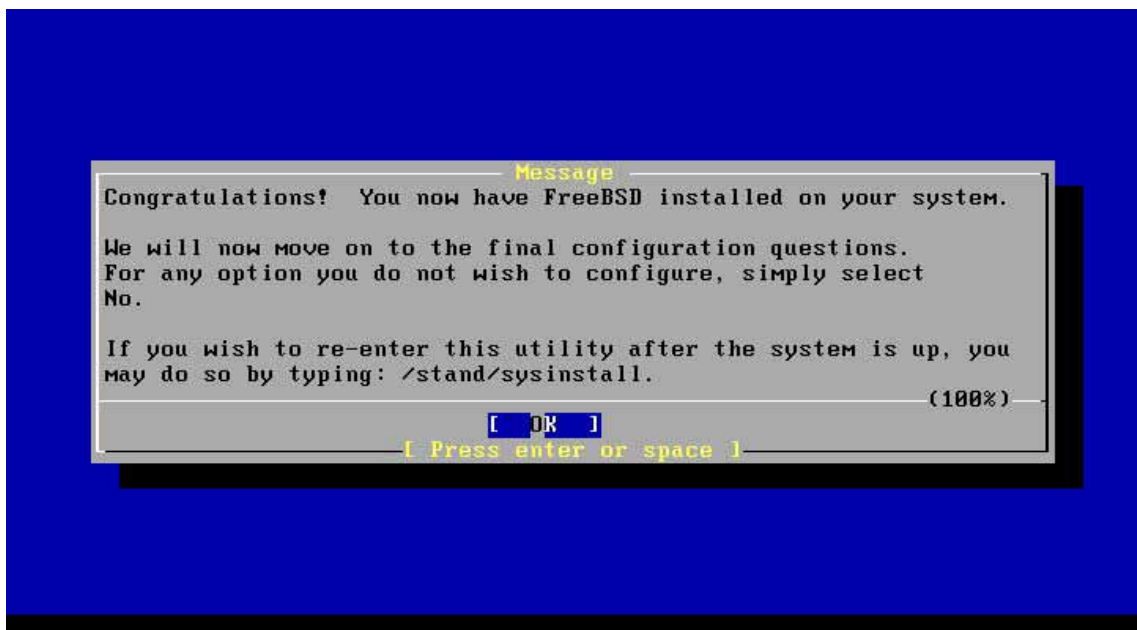
8. If you are sure about installing FreeBSD on your system, press Yes.



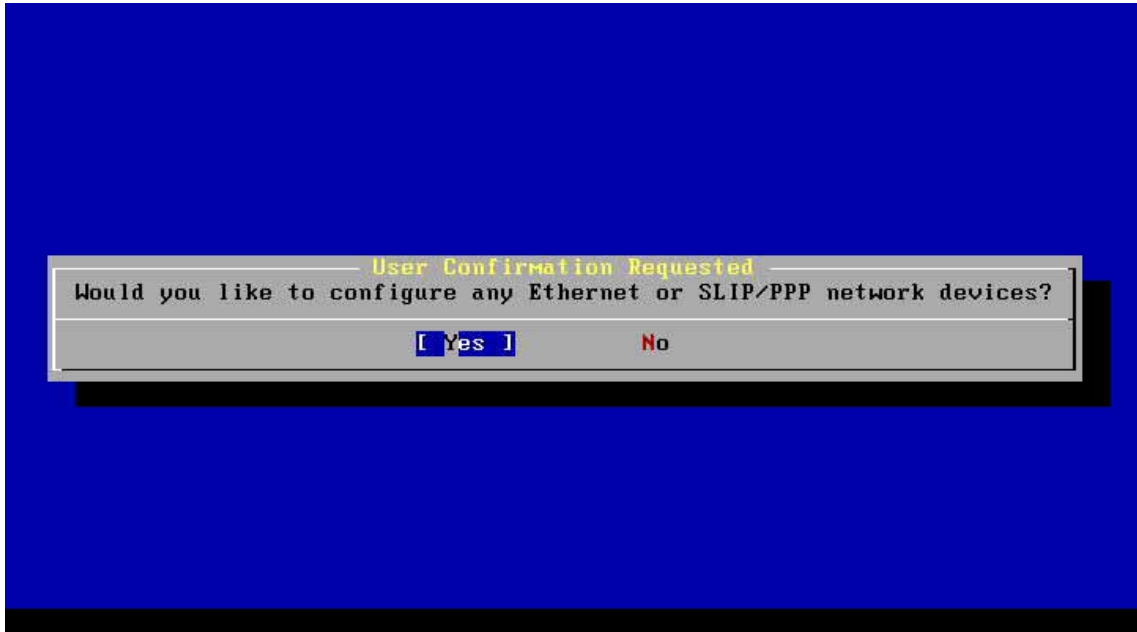
9. The system will start installation.



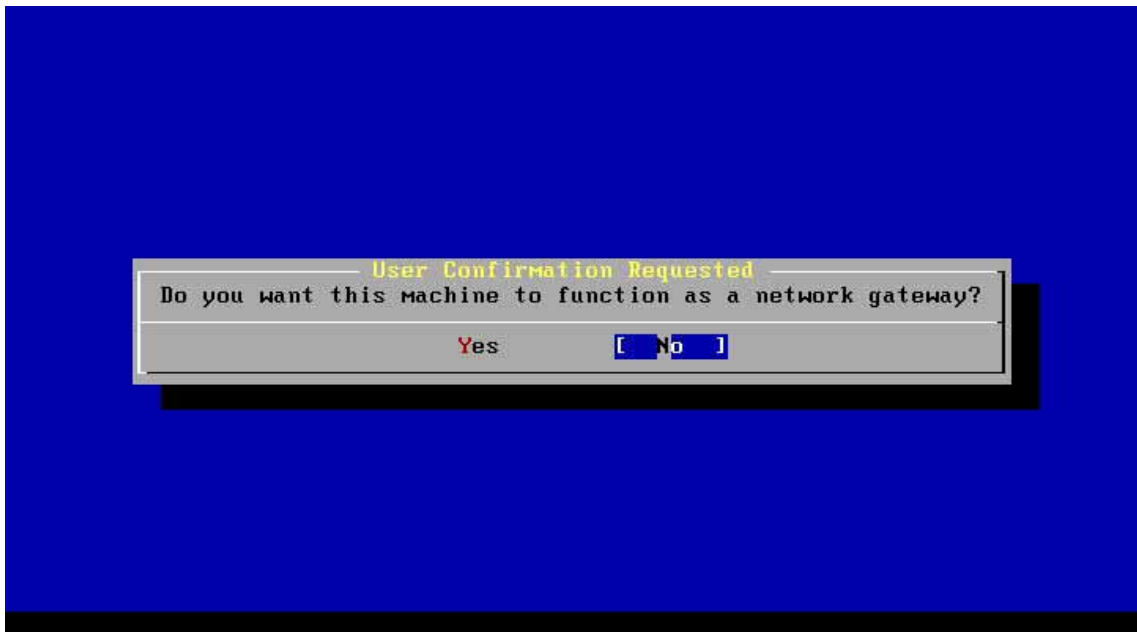
10. After the installation, the system will ask you to do the post-installation configuration questions, so press OK.



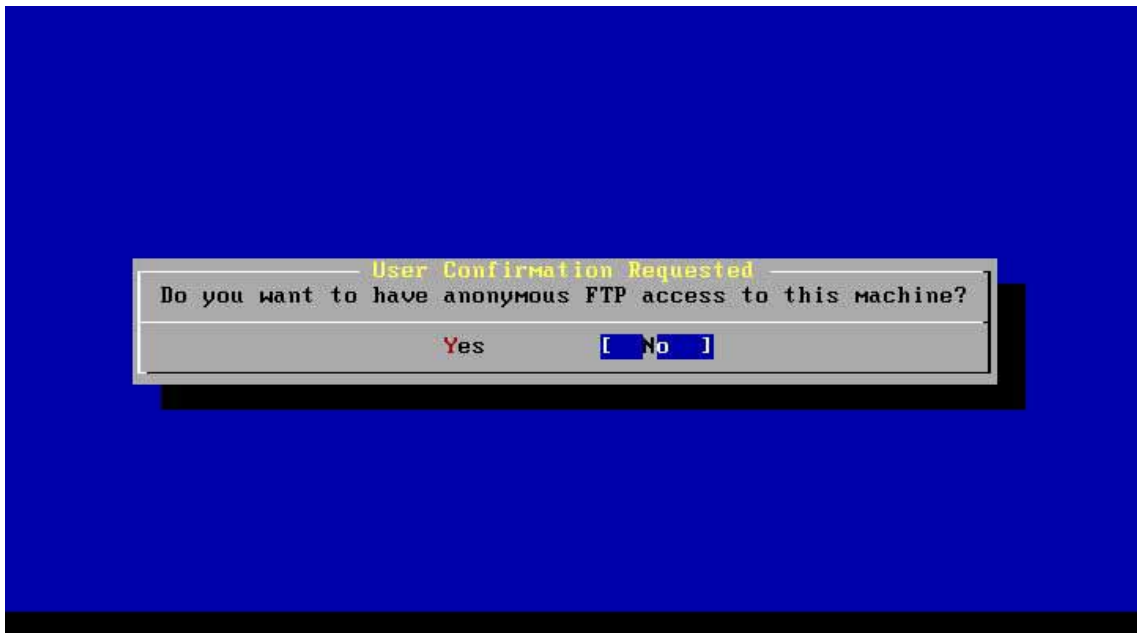
11. For the Ethernet configuration, press "No".



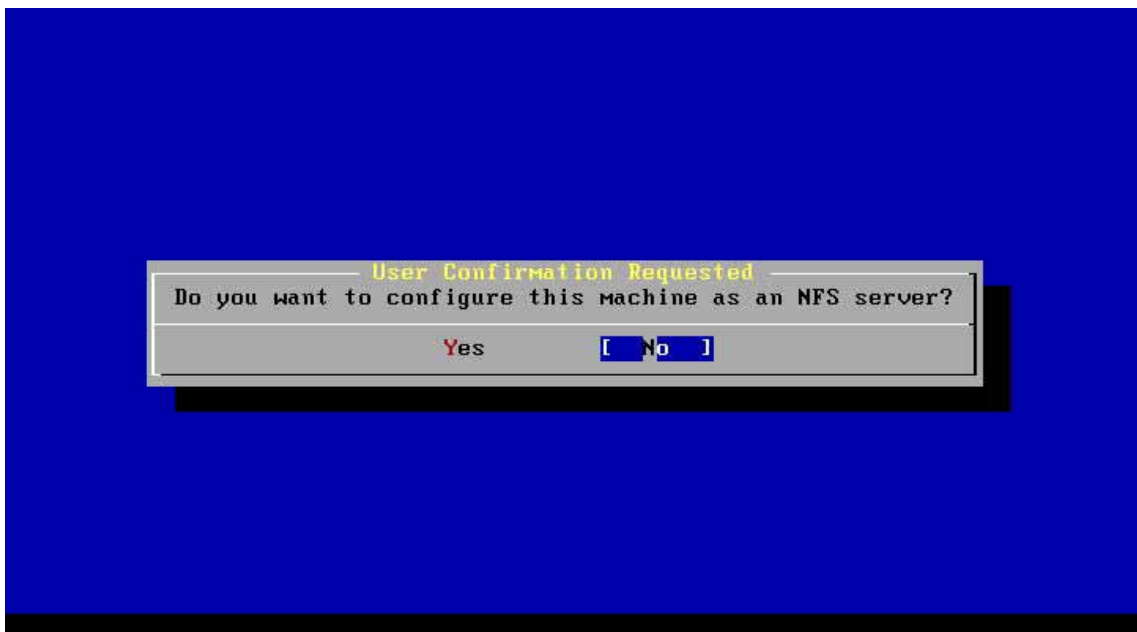
12. You will be asked to function this machine as network gateway, so press "No".



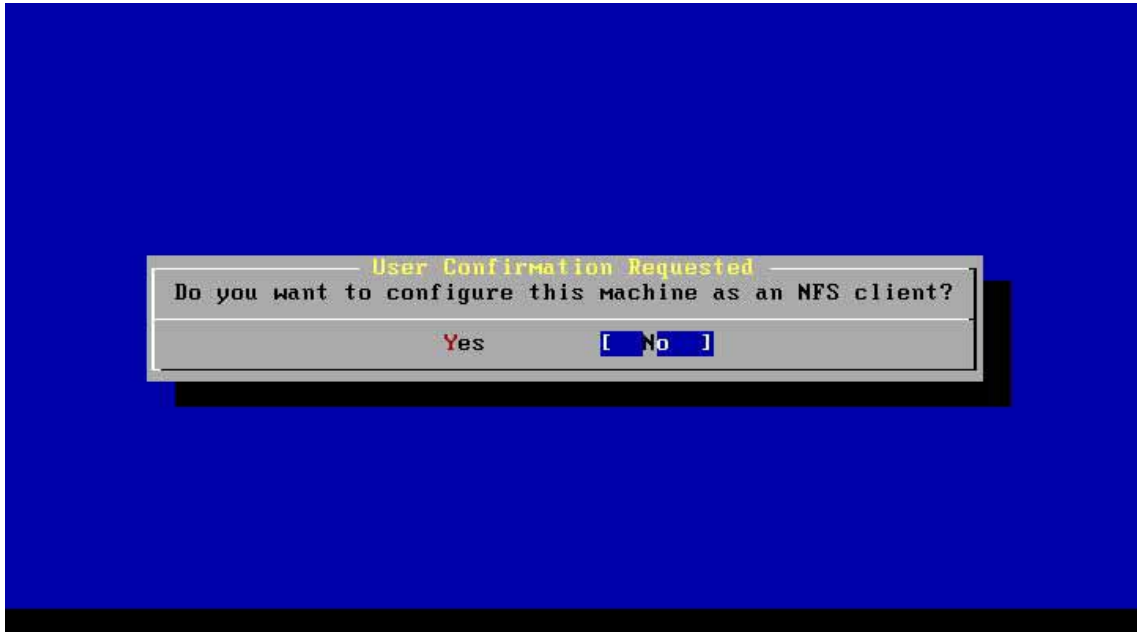
13. You will be asked to have anonymous FTP access to this machine, so select "No".



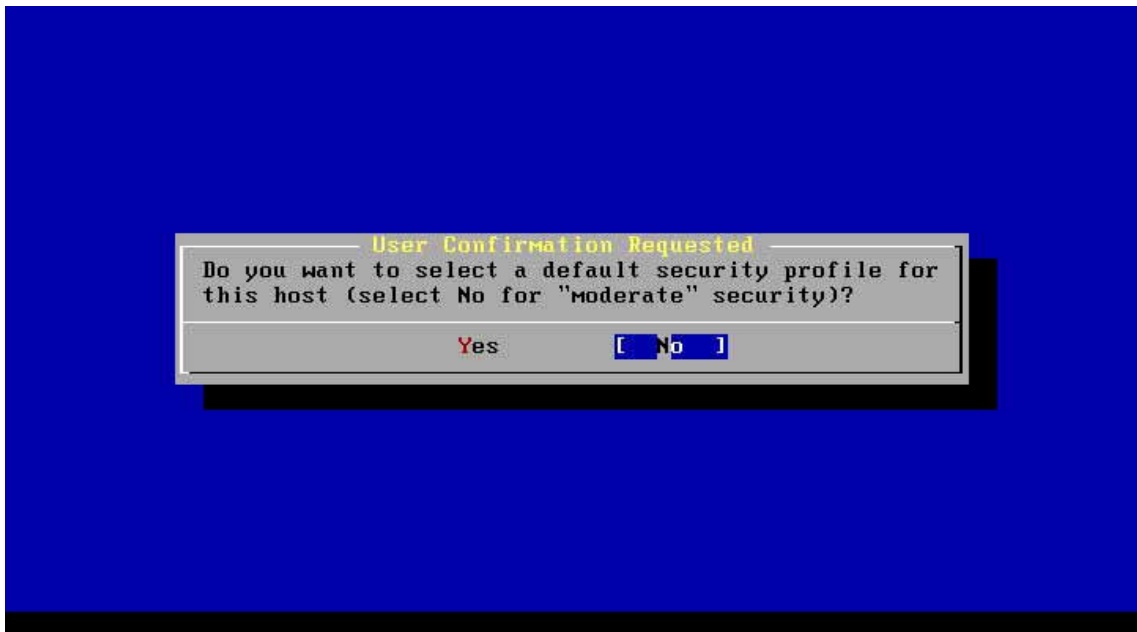
14. You will be asked to configure this machine as an NFS server, so press "No".



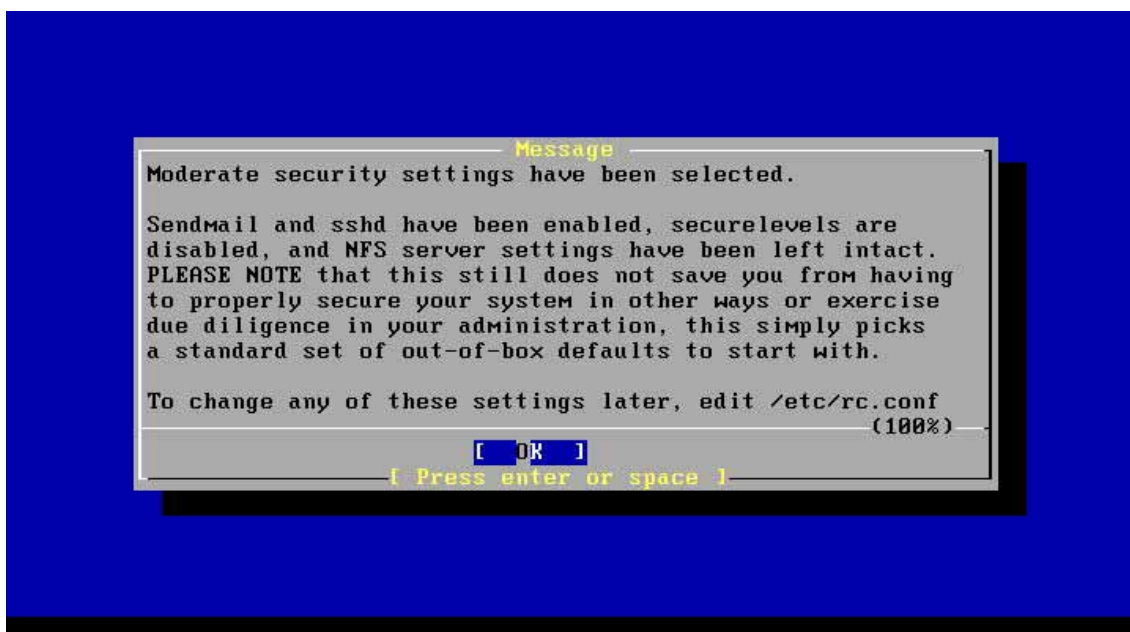
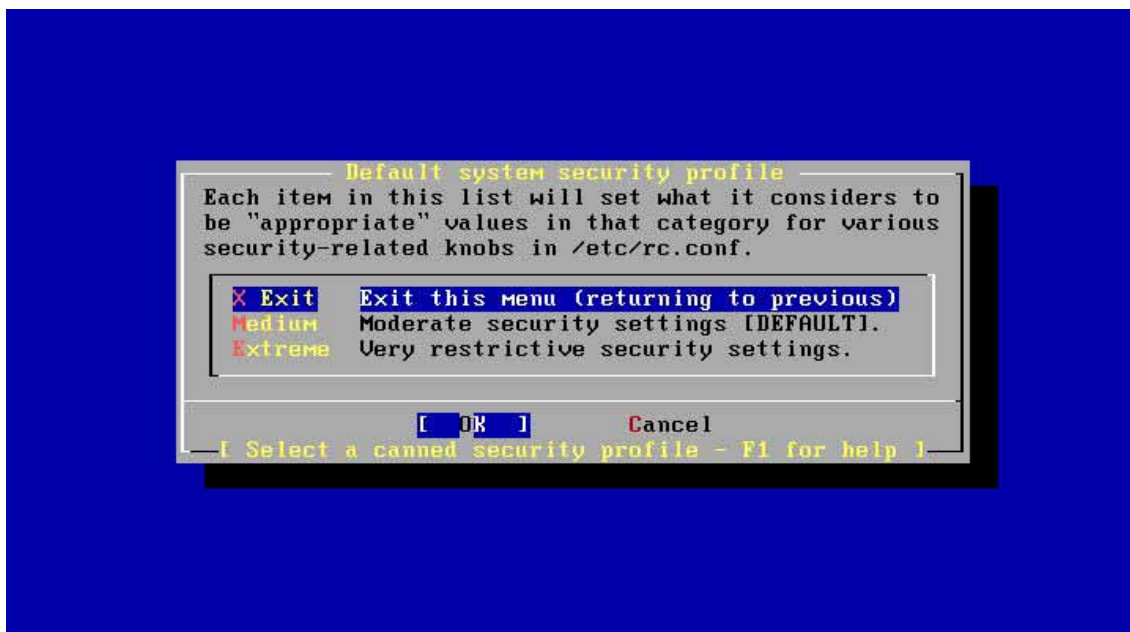
15. For the NFS client question, select "No", too



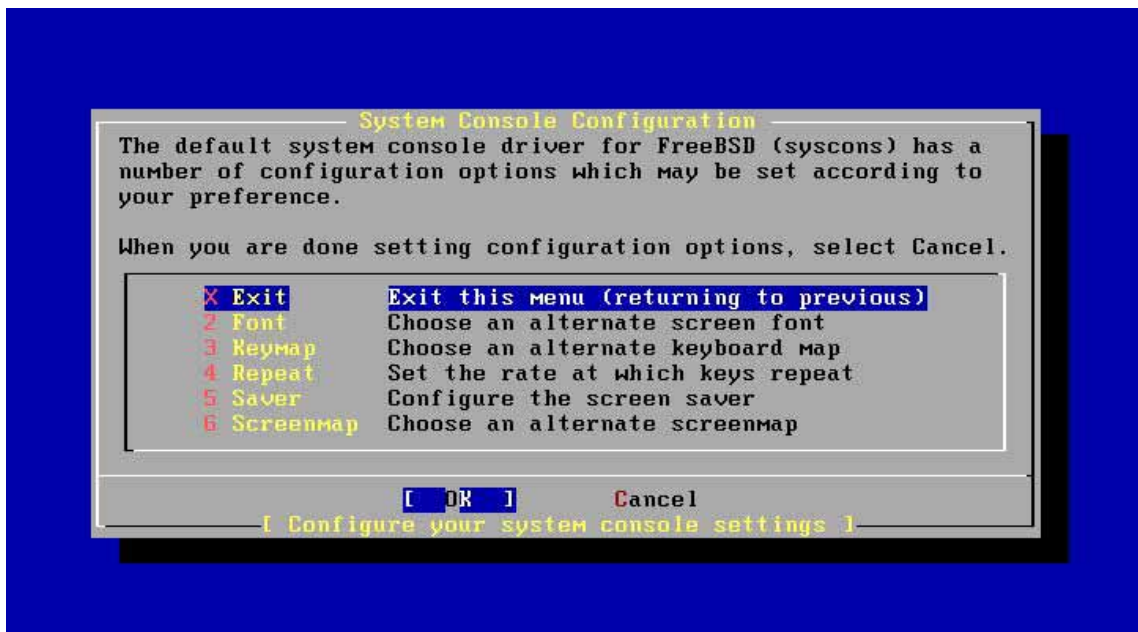
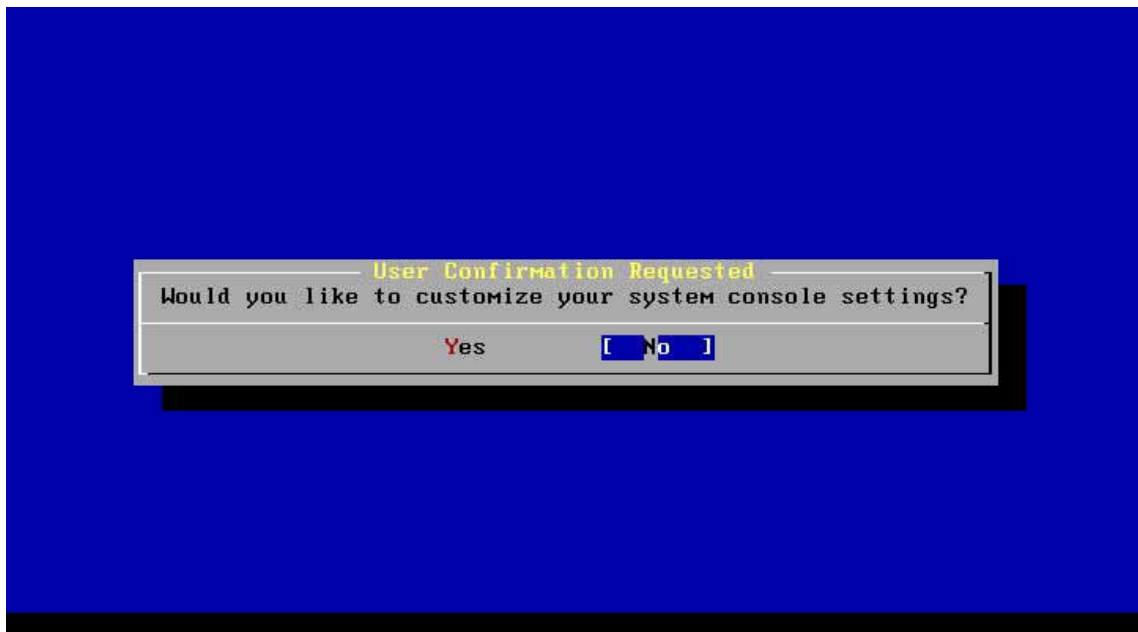
16. In the default security profile question, press "No".



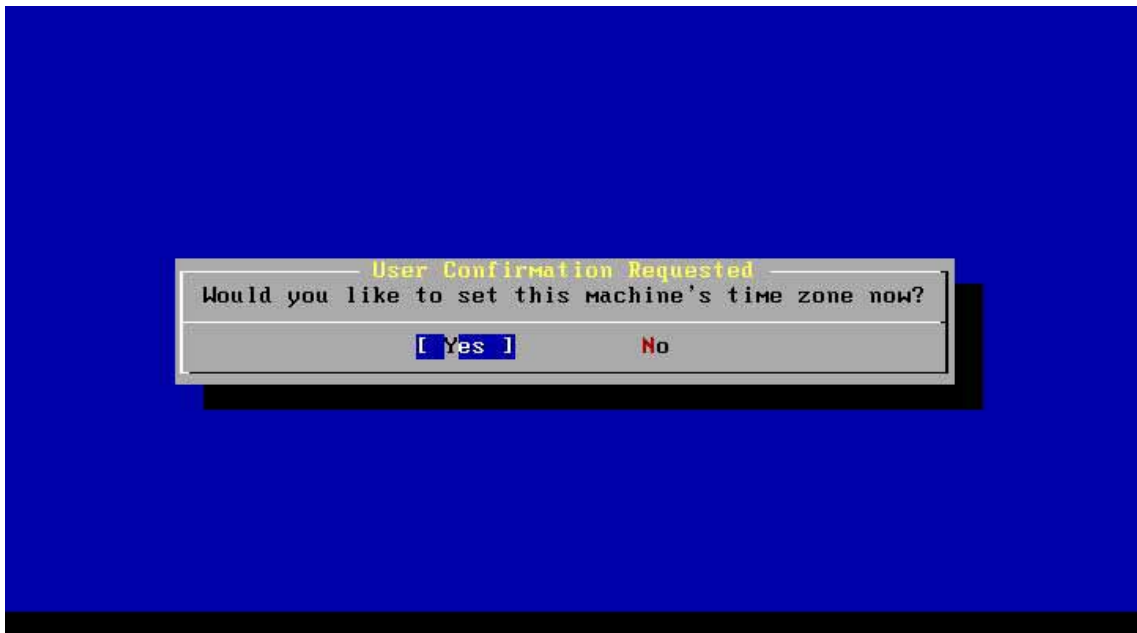
17. In the Default system security profile, choose "Exit", and choose moderate security setting.



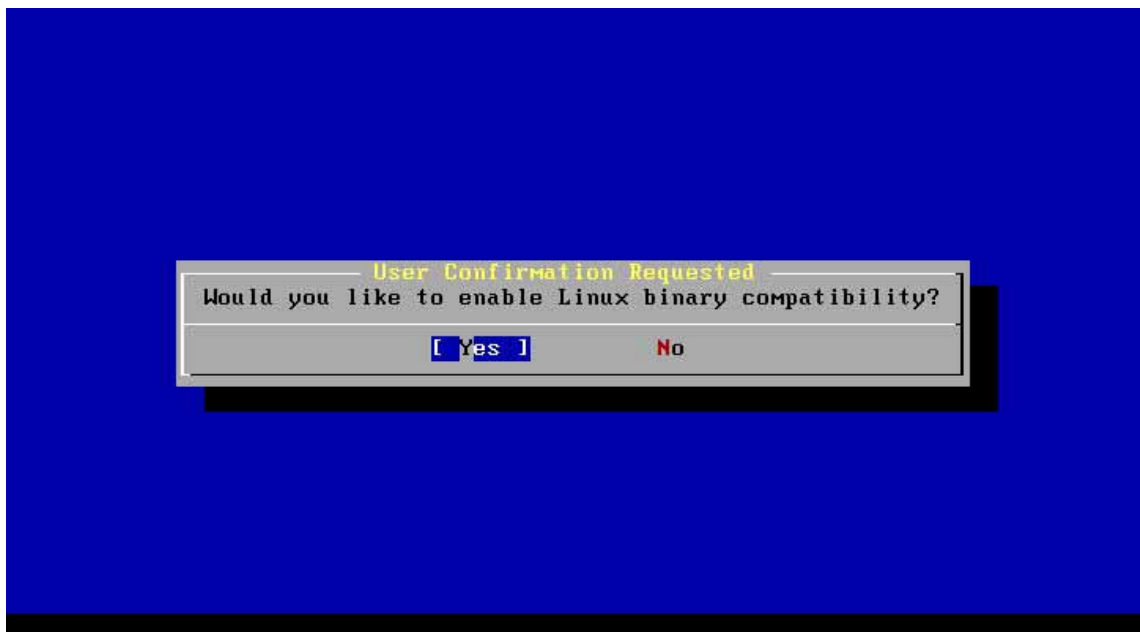
18. The system asks to customize the system console setting, select "No", and Exit the menu.



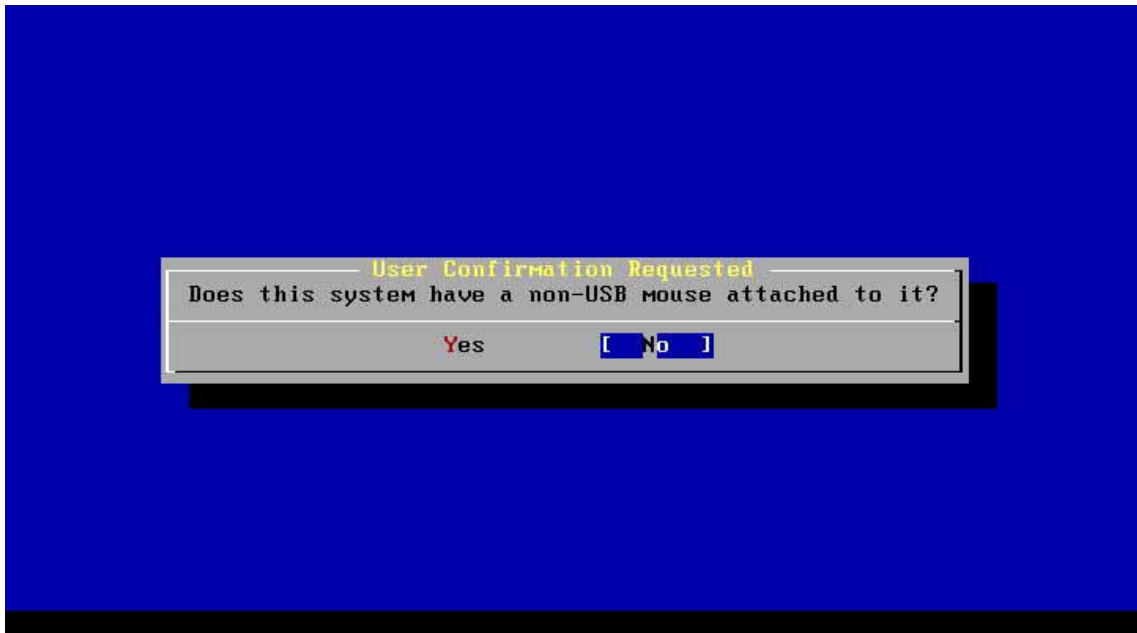
19. The system will ask to set the time zone, so select "Yes" and set your time zone.



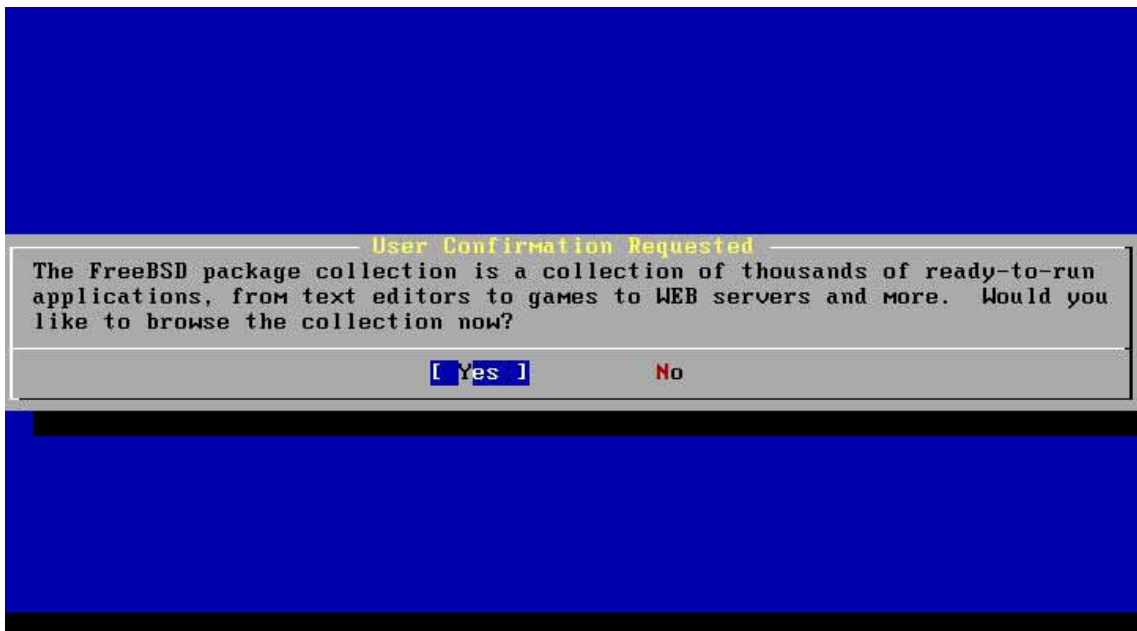
20. For the Linux binary compatibility, select "No".



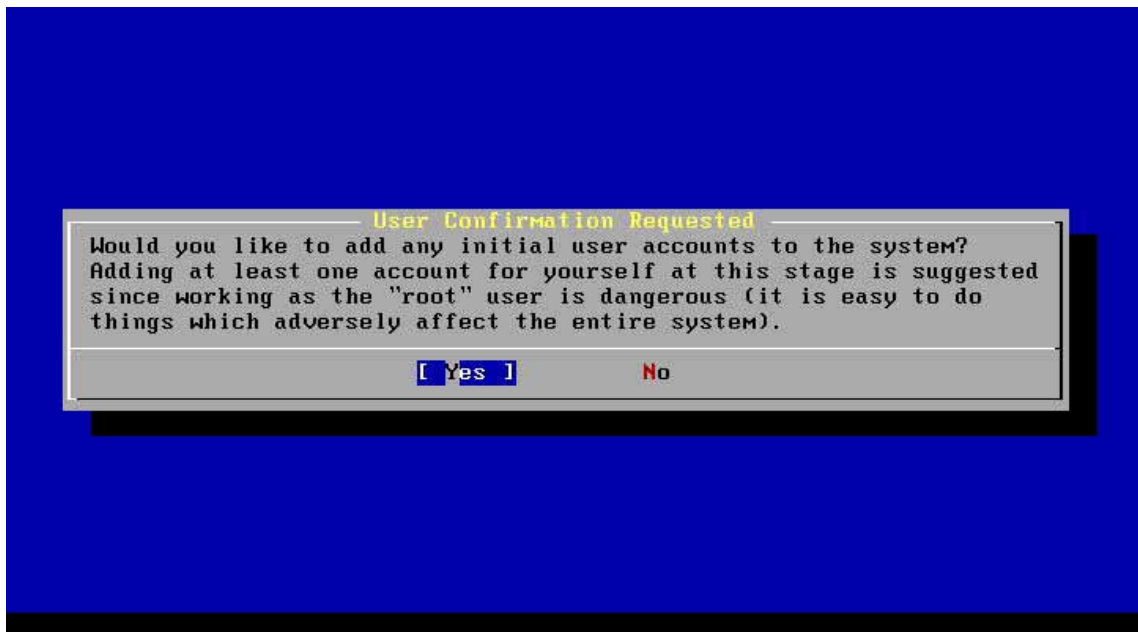
21. The system will ask if the system have a non-USB mouse attached to it, but we are not going to use mouse anyway with FreeBSD, so select "No".



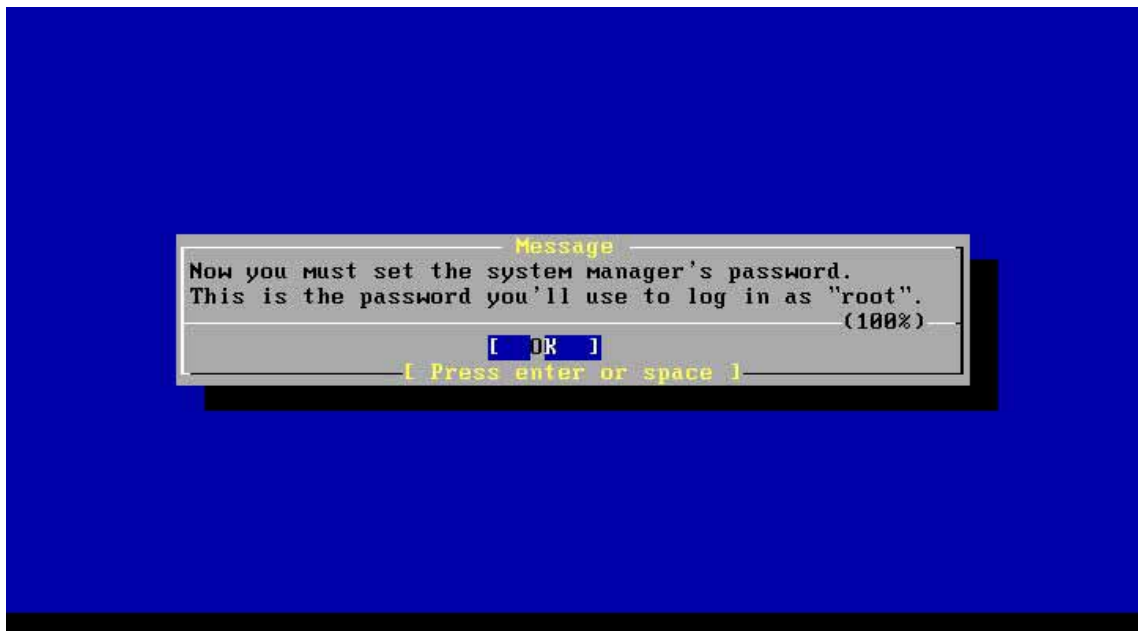
22. The system will ask if you want to see the FreeBSD package collection, so select "No".



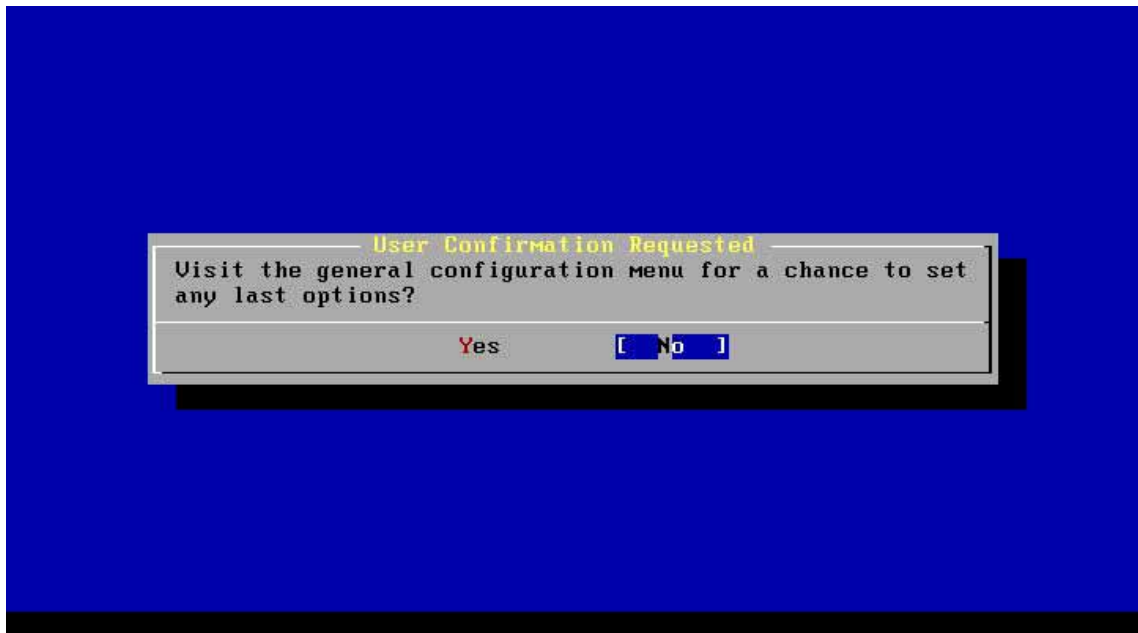
23. They will ask to make accounts to log in to this PC, so press Yes and make your log in account.



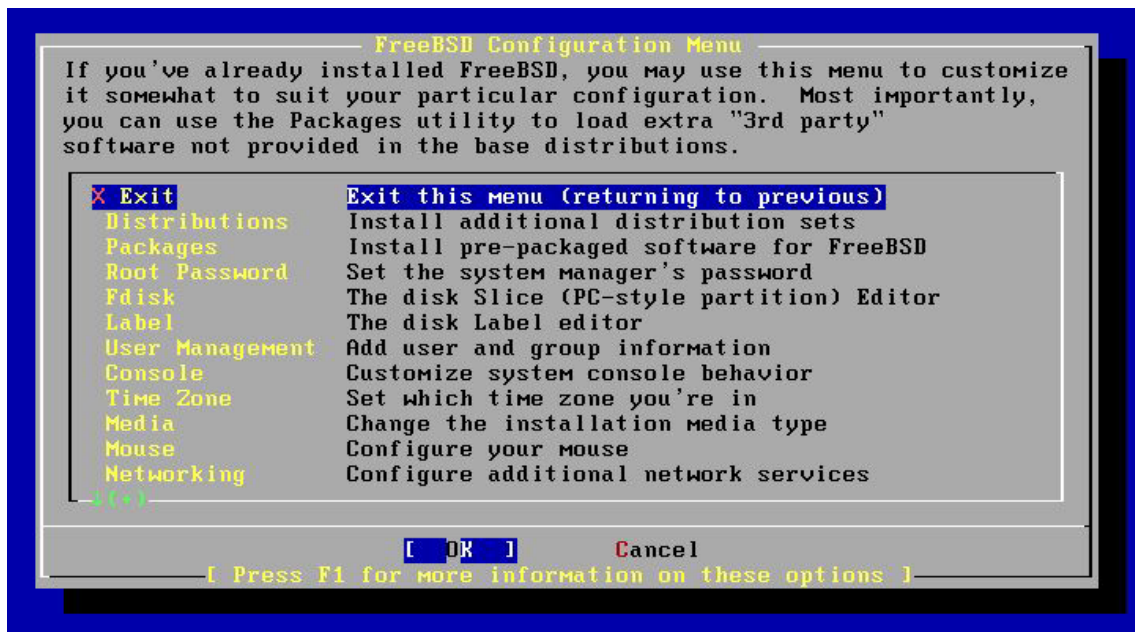
24. Set the root password. It should be combination of numbers and characters, and difficult to remember.

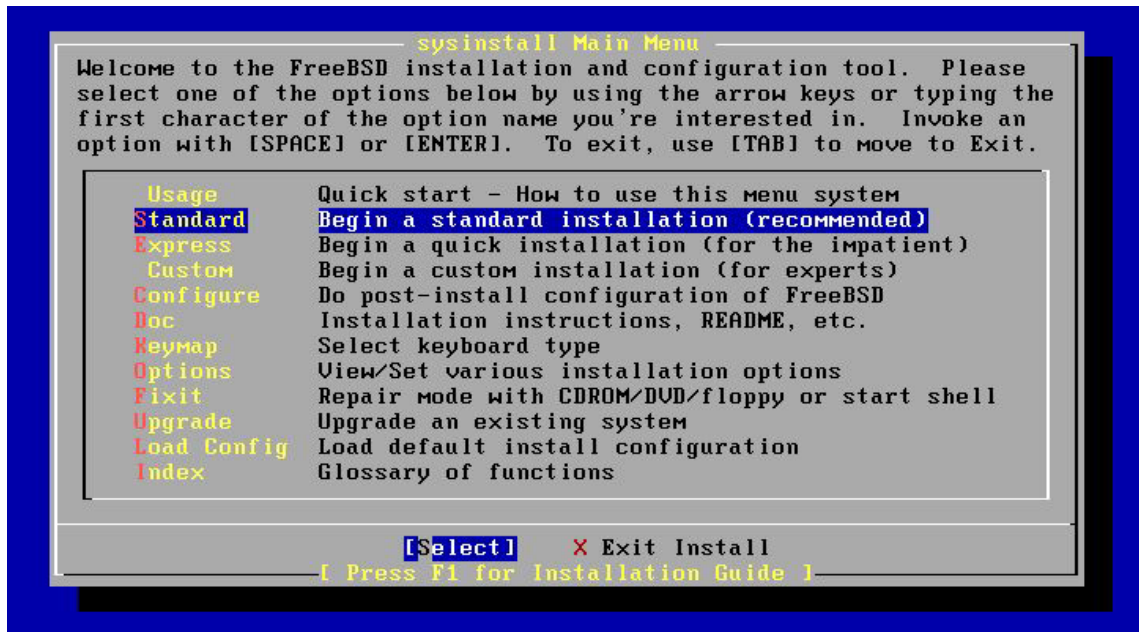


25. They will ask to visit the general configuration menu, select "No".



26. Exit this menu, and Exit Install.





27. The system will reboot, and installation ends. Do not forget to remove CD-ROM from the drive.

